

Channels

▼ Imaging Channels in Cooper Basin – using our new approach

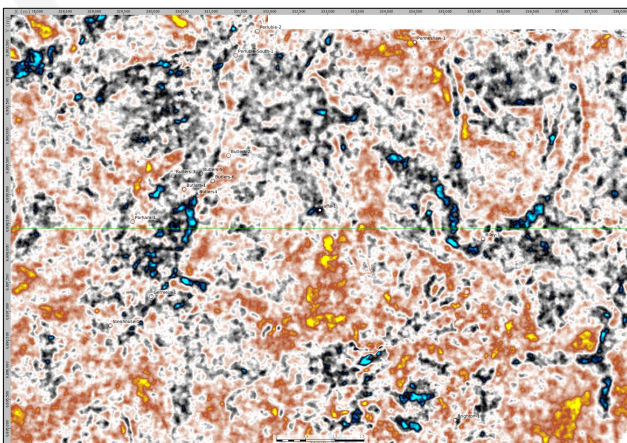
Stacked fluvial channels in the Cooper Basin contain potentially large remaining quantities of stratigraphically trapped oil. The ‘holy grail of seismic in the Cooper Basin’: the imaging of these channels has been long sought, but has proved mostly elusive. Our RPM™ technology has recently shown images of channels in existing 3D.

▼ Large Prize Remaining – stratigraphically trapped oil

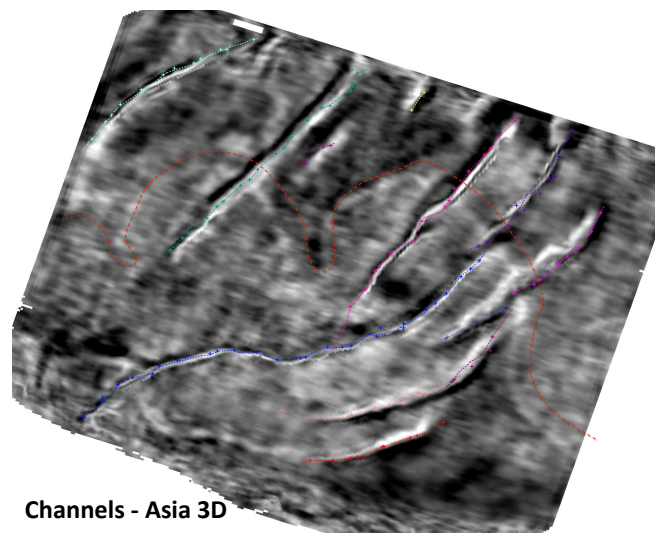
Seeing channels helps target sands for drilling, reduce risk, increase Pg and assist with subsequent reservoir management. Stacked fluvial channels in the Cooper Basin are up to 5 m thick and 200 m wide. They can have porosities in the range 9 – 16% and flow 25 – 2000 bopd. Bypassed reservoirs indicated from 3D geometry of high-sinuosity fluvial channels represent one of the three top remaining prizes.

▼ AusGeos Solution - The Right Experience and Software

AusGeos processors have extensive Cooper Basin experience and have developed an advanced processing technique that brings out these channels. The method includes detailed statics, advanced velocity analysis, revised muting and a 4th order NMO correction (Globe Claritas’ software), plus our RPM™ processing flow (no binning required) featuring a geologically and data-driven migration aperture and offset weighting. The results clearly speak for themselves.



Birkhead channels imaged in Calpurnus 3D, Cooper Basin



Channels - Asia 3D



SEISMIC MADE CLEARER™

AusGeos Pty Ltd AusGeos.com.au 0423 153 122