

Legacy Data Re-Processing

▼ Cheaper, Quicker and much Easier than Acquisition

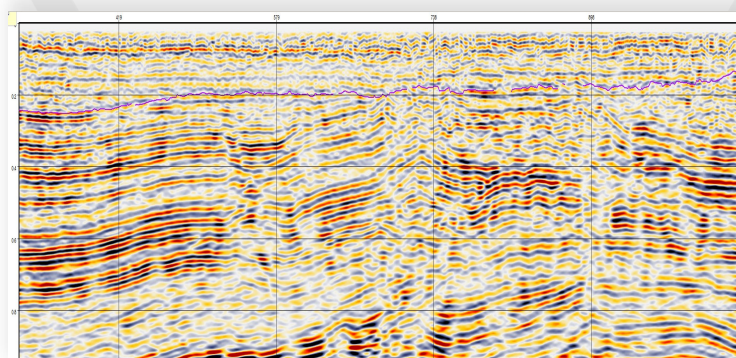
A surprising amount of useful information remains in older data. Environmental restrictions and exclusions make acquisition of new data challenging. Re-processing can cost 1/40th of the cost of acquisition and with our RPM™ processing we can rapidly test the improvements possible.

▼ RPM™ – alternative to Kirchhoff

At AusGeos we employ specialised statics, velocity and migration methods. Our implementation of Kirchhoff deals well with poorly and irregularly sampled data, or narrow azimuth data – which are common in legacy seismic. RPM™ has substantial benefits over standard processing in areas of speed, quality, and shallow imaging.

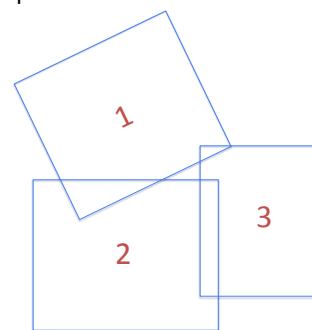
▼ 3D Data Merging – a fast, efficient and a lower cost solution

Legacy 3D data often have varying orientations, bin geometries and overlaps. Using RPM™, multiple 3Ds can be easily merged into a single volume with a single bin size and orientation without costing the earth. RPM™ is fast, efficient and superior at merging sparse data. An elegant solution to interpreting across multiple 3Ds.

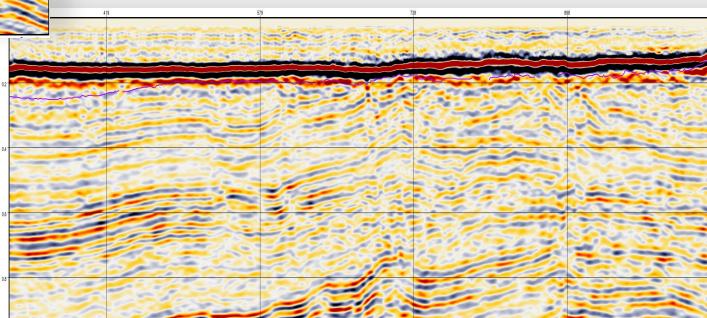


Line reprocessed by AusGeos

3D data Merging
Experts



Original 1991 data. False
unconformity evident.



SEISMIC MADE CLEARER™

AusGeos Pty Ltd AusGeos.com.au 0423 153 122