

Shallow Imaging

▼ CSG Applications – using our new approach

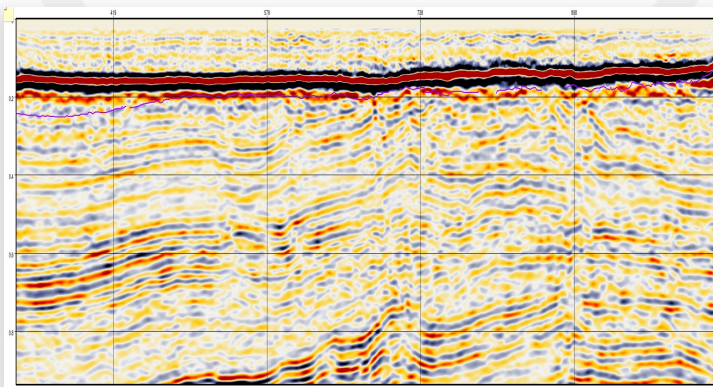
Depths shallower than 300 m are challenging to image using conventional seismic. In part this is due to Kirchhoff migration's need for regular and adequately sampled data. Denser VPs and receivers dramatically increases acquisition cost. With RPM™ processing, 12.5 m receiver and 25 m source interval images up to 80 m.

▼ Environmental – aquifer and faulting

Clear imaging of coal seams, aquifers and shallow faults is demanded in today's environmentally sensitive world. We recommend cable-less acquisition and crooked line processing using Globe Claritas™ and RPM™. The combination provides superior shallow imaging without *unnecessarily* raising the acquisition cost.

▼ Experience and Software

Our experienced Operations Geophysicists can optimise the acquisition parameters for shallow imaging, and work with acquisition contractors to acquire the sharpest data possible. Our processors will use Globe Claritas' detailed statics, advanced velocity analysis and our proprietary RPM™ processing flow (no binning required) to reduce "sharkbites" critical reflections, refractions and noise. Simply, our best shallow data.



Clean up data with false unconformity

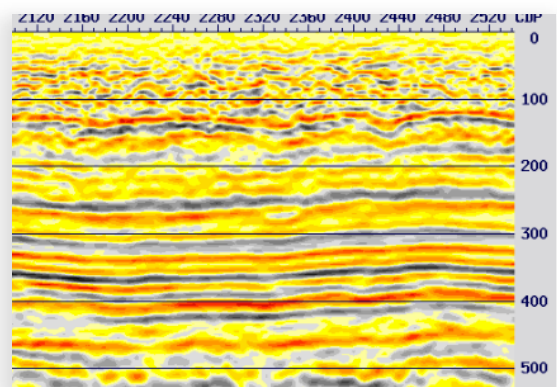


Image to less than 100 m

Vertical depth scale in meters